

# Jeet F Series Videoscope



## Parameters:

ITEM \ Specs	F60	F60S	F60Pro	Remark
<b>Probe</b>				
Diameter	6.0mm			
DOF	10~100mm			
Sensor	HD image sensor			
Resolution	HD 1000000 pixels			
Working length	2m/3m, customized			
Material	abrasion-resistant alloy			
Temperature	No			
<b>System</b>				
Case size	360×360×100mm			
Host size	300×220×59mm			
Host weight	1.9KG			
Host material	magnesium aluminum alloy			
Display resolution	1920×1200			
Joystick handle size	235×90×70mm			
Joystick handle weight	0.4KG			
Articulation	360°			
Bending angle	≤150°			
Storage	Internal memory/SD card/U disk (optional)			
I/O port	Micro USB×2 mini HDMI×1 SD slot×1 Air plug×1			
Video output	HDMI			
Light source	Real cold light source+fiber			

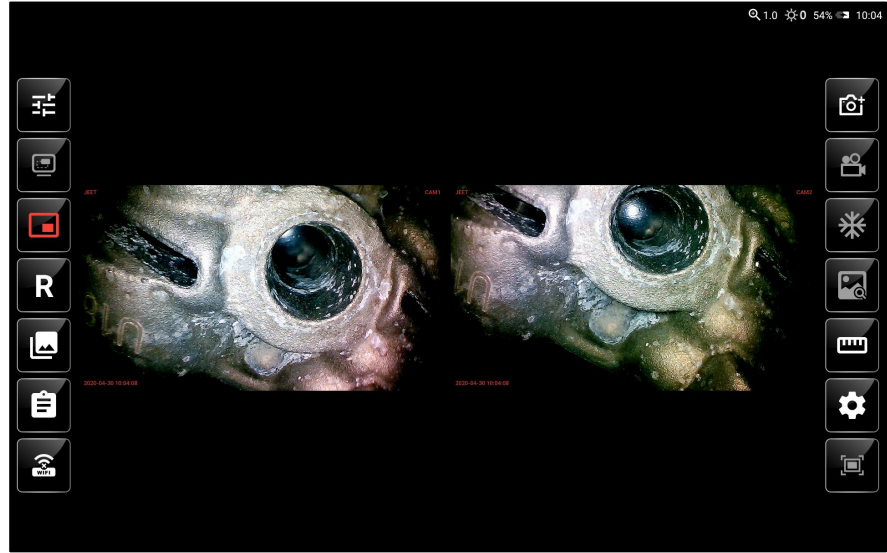
Brightness level	5X		
Illumination	Max 100000LX		
White balance	Automatic		
Battery capacity	3000mA/3.7V × 4		
Battery charging	12V, 1A		
Power	10W		
Battery work time	2.5h		
DC mode	Support charging while use		
<b>Software</b>			
Operation system	Real-time intelligent multitasking operating system		
User interface	Button+touch screen		
File management	Intelligent file management system, support to the memory and SD card, USB storage media files and folders for the following operations: copy, cut, rename, delete, and so on		
Image adjustment	Display ratio adjustment (1:1 display/full screen display), resolution selection, camera parameter setting (brightness,contrast, gamma,chroma,saturation,sharpness),negative filter, digital zoom (5x digital), image freezing (real-time graffiti saving), call contrast	Display ratio adjustment (1:1 display/full screen display), resolution selection, camera parameter setting (brightness,contrast, gamma,chroma,saturation,sharpness),negative filter, digital zoom (5x digital), image freezing (real-time graffiti saving), call contrast	
Image zoom in/out	3X		
Image format	JPG		
Video format	MP4		
Text annotation	Photo text overlay, can choose the font size of the annotation text		
Image annotation	Seal (default/custom), doodle, text input		
Software upgrade	On-site upgrades are available via SD card and USB storage media		
Language	English / French / German / Spanish / Japanese / Traditional Chinese / Simplified Chinese / Russian / Korean		

Utility software		MDI report generation software Dual video input switching software (it shall be equipped with the direct side view switching pipeline) Picture in picture comparison software	MDI report generation software Dual video input switching software (it shall be equipped with the direct side view switching pipeline) Picture in picture comparison software 3D measurement software	
<b>Measurement function</b>				
Point to point distance			Measure the distance between two points	
Point to line distance			Measure the distance from the point to the line	
Point to surface depth			Measure the distance from the point to the surface	
Multi-segment line length			Measure the total length of multiple continuous lines	
Closed segment length			Measure the length of multiple closed continuous lines	
Line to surface depth			Measure the depth of the line to the specified surface	
Area			Measure the area of a closed polygon ( pending )	
Partial magnifying window assist function			3X	
picture can be measured times			Multiple measurements can be made continuously	
Measuring list			Multiple measurements can be tabulated	
Standard precision value			0.1mm	
Minimum precision value			0.01mm	
Accuracy			≈95%	

## Product function interface



Main Interface



Dual video switching



Image settings and resolution selection

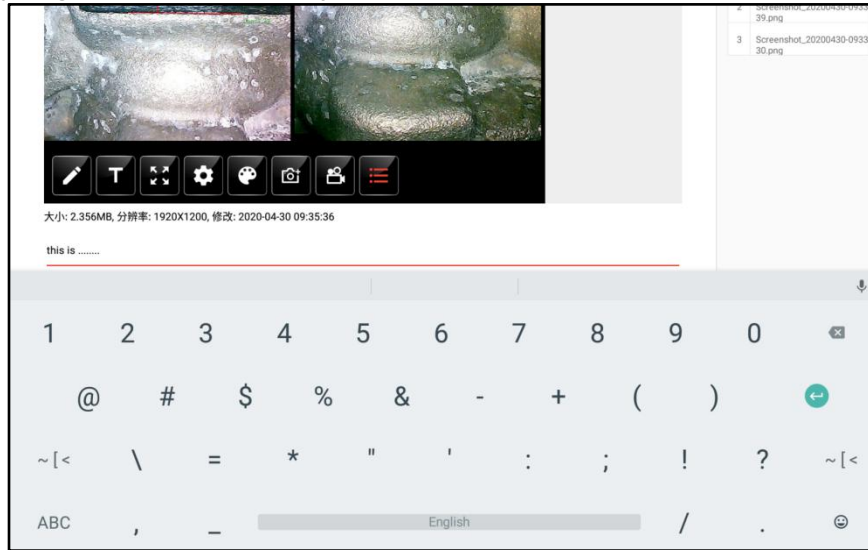


Full Screen

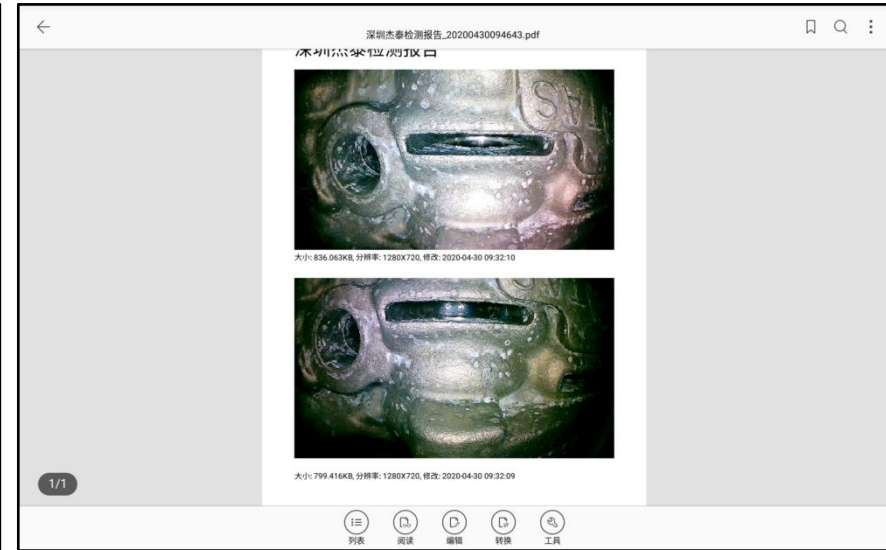


# Utility software

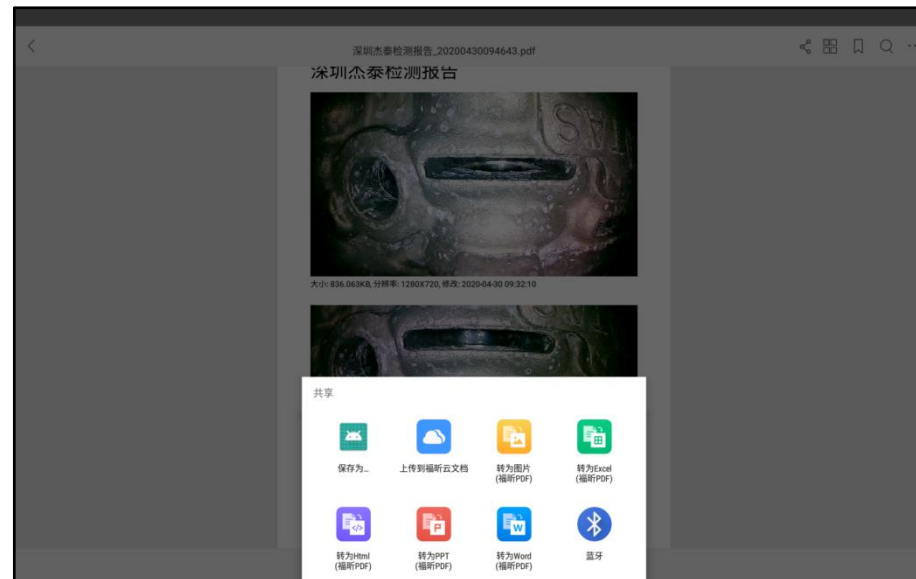
## 1、 MDI report generation and delivery software



Test report editing

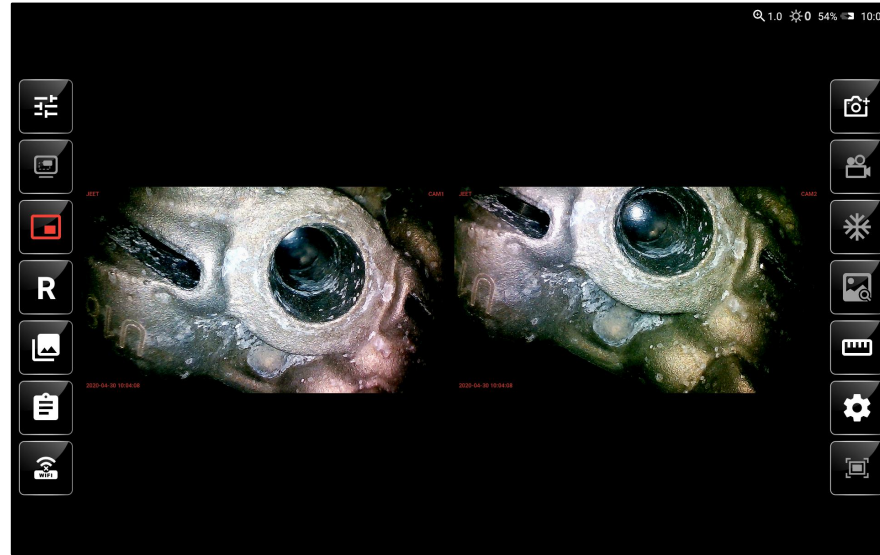


Test report generates a PDF file



Test report is sent to the mobile terminal via bluetooth

## 2、 Dual video input switching software


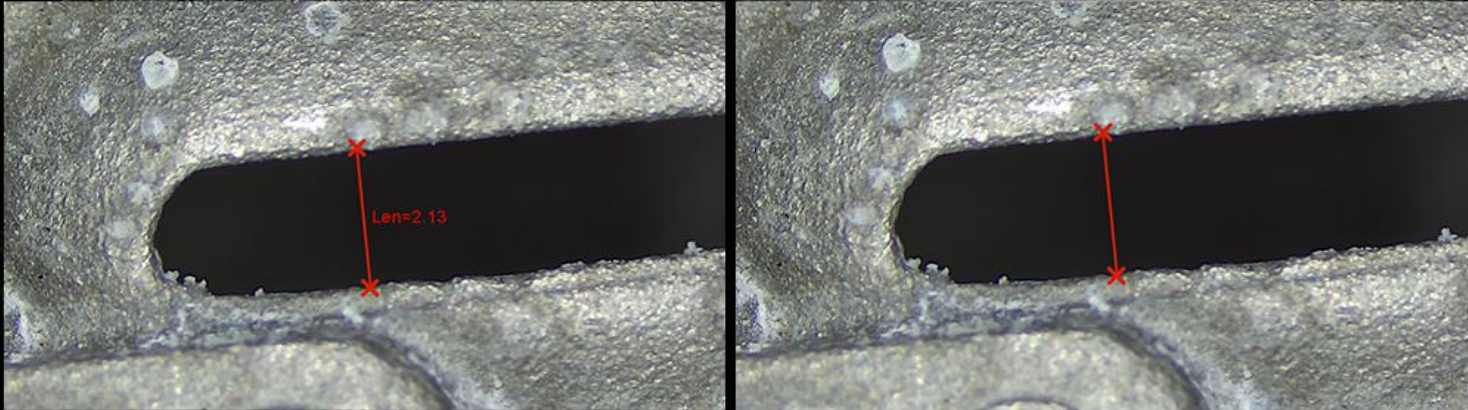



## 3、 Picture-in-picture static/dynamic comparison software



#### 4、3D measurement software

← 通过手势缩放和拖动图像

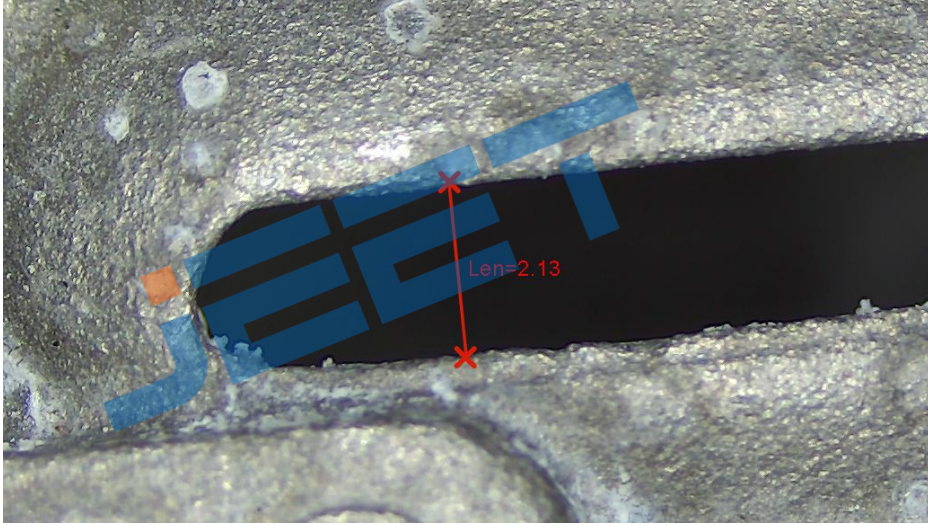


显示列表

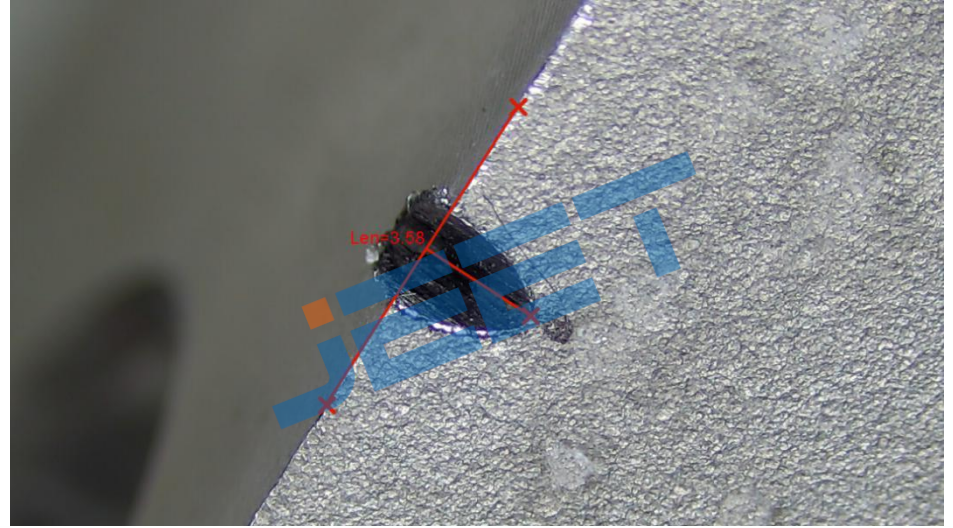
序号	项目	测量
1	Point_Plane	FLen=2.13



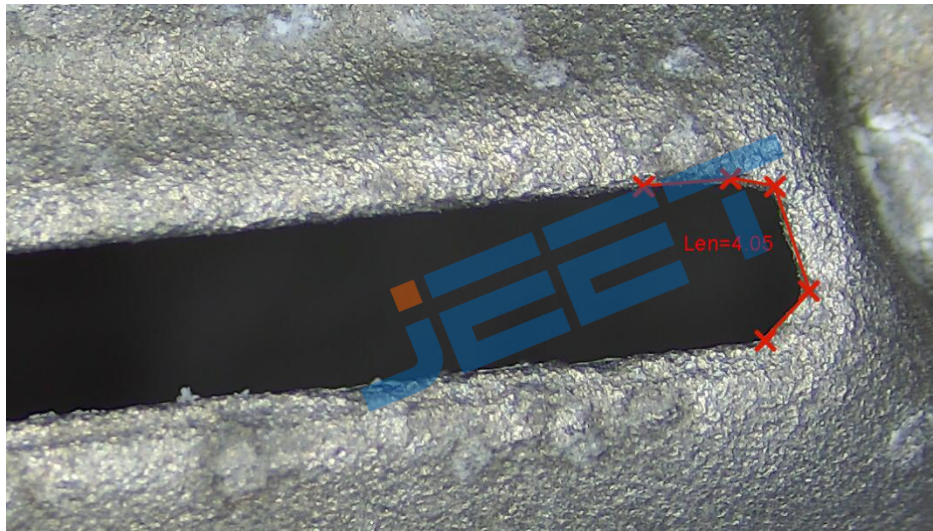
### 3D measurement case



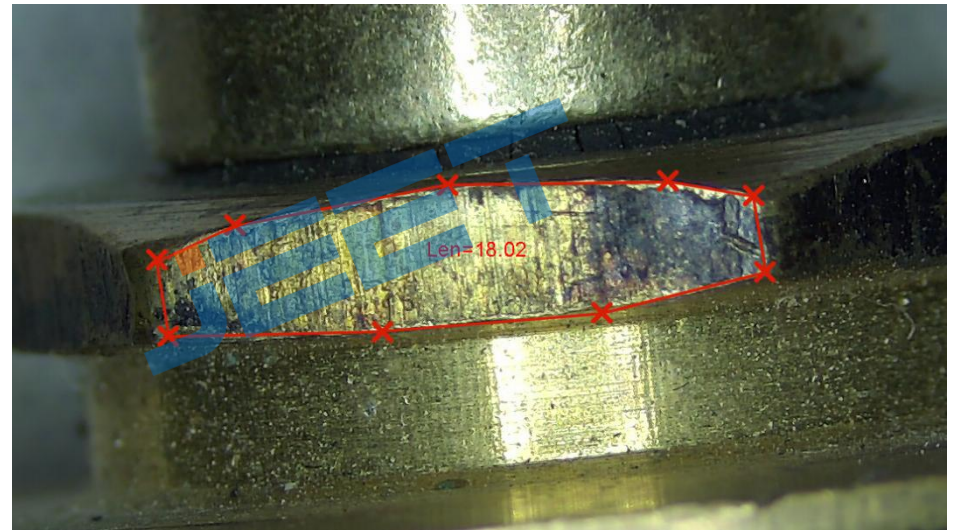
Point to point distance



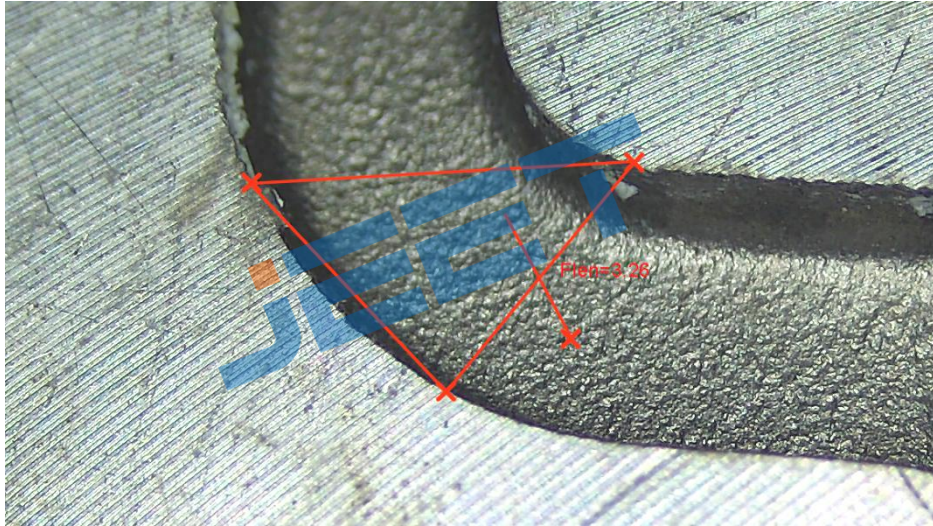
Point to line distance



Multi-segment line length



Closed segment length



Point to surface depth